



David
Suzuki
Foundation



Recognizing the true *\$value* of Ontario's Greenbelt

Faisal Moola, PhD
David Suzuki Foundation

NATIONAL BESTSELLER



The World Is Flat

A BRIEF HISTORY OF
THE TWENTY-FIRST CENTURY

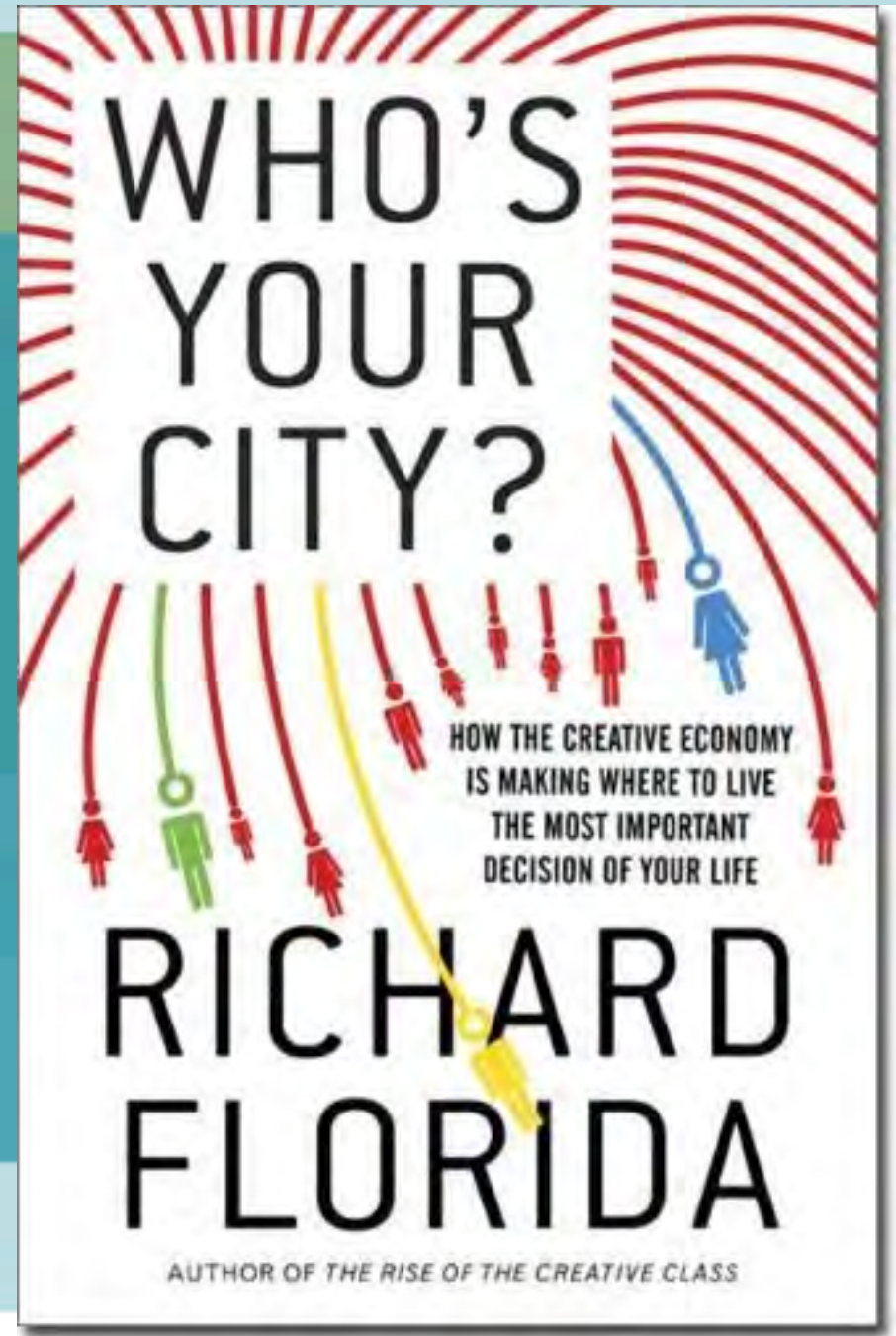
Thomas L. Friedman

WHO'S YOUR CITY?

HOW THE CREATIVE ECONOMY
IS MAKING WHERE TO LIVE
THE MOST IMPORTANT
DECISION OF YOUR LIFE

RICHARD FLORIDA

AUTHOR OF *THE RISE OF THE CREATIVE CLASS*



Economic Activity in a Spiky World



SOURCE: U.S. DEFENSE METEOROLOGICAL SATELLITE PROGRAM

MAP BY TIM GILDEN

Light Based Regional Product Worldwide (an index of economic activity that is correlated with the light-footprint / km²)

Innovation in a Spiky World



SOURCES: THE WORLD INTELLECTUAL PROPERTY ORGANIZATION; UNITED STATES PATENT AND TRADEMARK OFFICE

MAP BY TIM GULDEN

Number of Patents Granted Worldwide

Star Scientists in a Spiky World

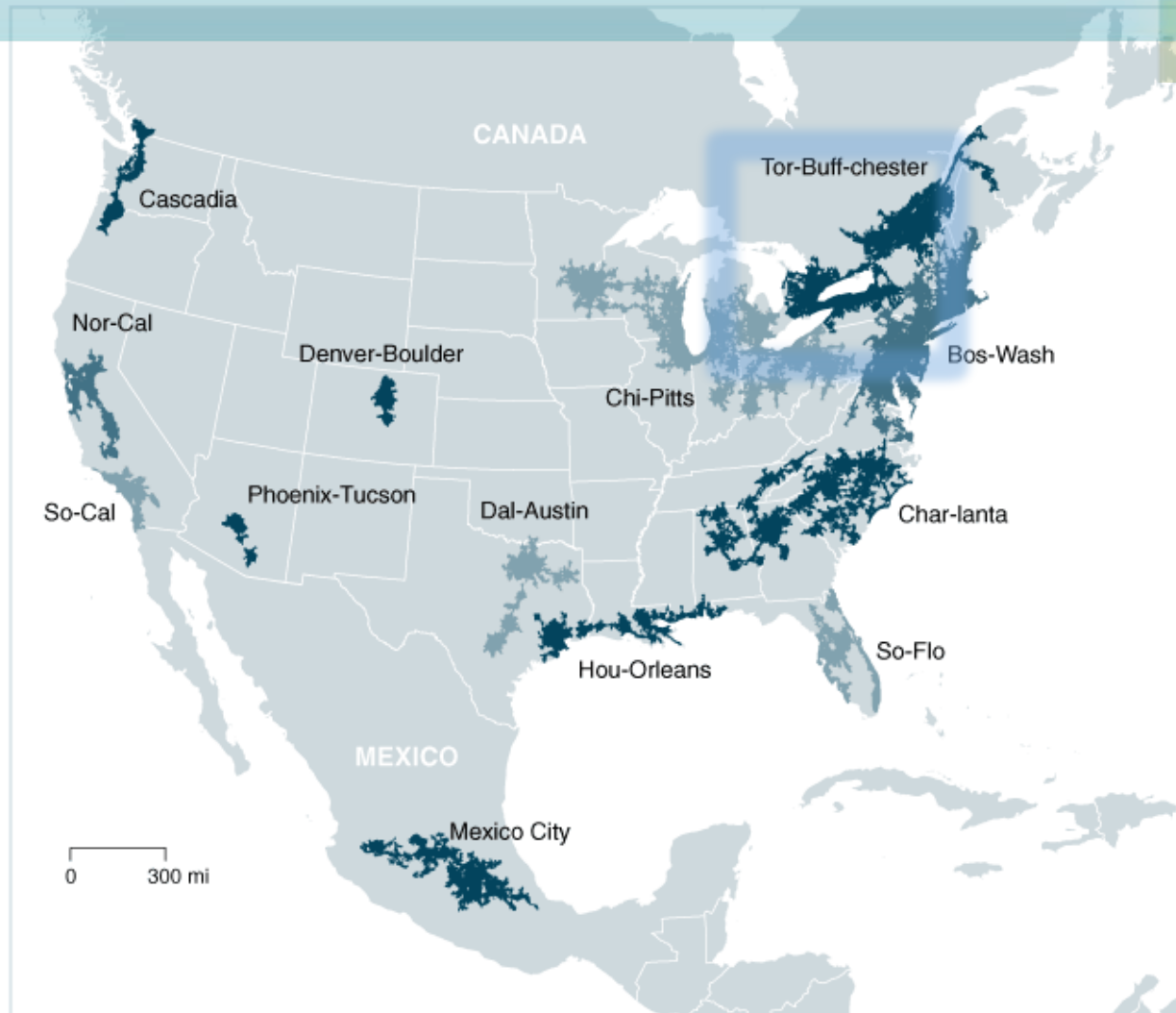


SOURCE: MICHAEL BATTY, CENTRE FOR ADVANCED SPATIAL ANALYSIS, UNIVERSITY COLLEGE LONDON

MAP BY TIM GULDEN

Residency of the most heavily cited scientists worldwide


Urban Mega-regions of North America



A satellite image of North America at night, showing a dense network of city lights across the continent. The lights are concentrated in the eastern half and along the West Coast, with a few major hubs in the central and mountain regions. The Great Lakes and the Gulf of Mexico are visible as dark areas. A semi-transparent blue box with a white border is overlaid on the top right, containing the title text.

North America at Night

US Defense Meteorological Satellite Program (NOAA)

A photograph of a wetland or forest scene. In the foreground, there are several thin, bare tree trunks and branches. The water is a deep blue color, reflecting the sky and the surrounding vegetation. In the background, there is a dense stand of tall, dry reeds or grasses. The overall scene is a natural, somewhat desolate landscape. A semi-transparent teal and green rectangular overlay is positioned in the upper right quadrant, containing the text.

Forests and wetlands
help us fight climate
change



Green Roofs Cool our Homes

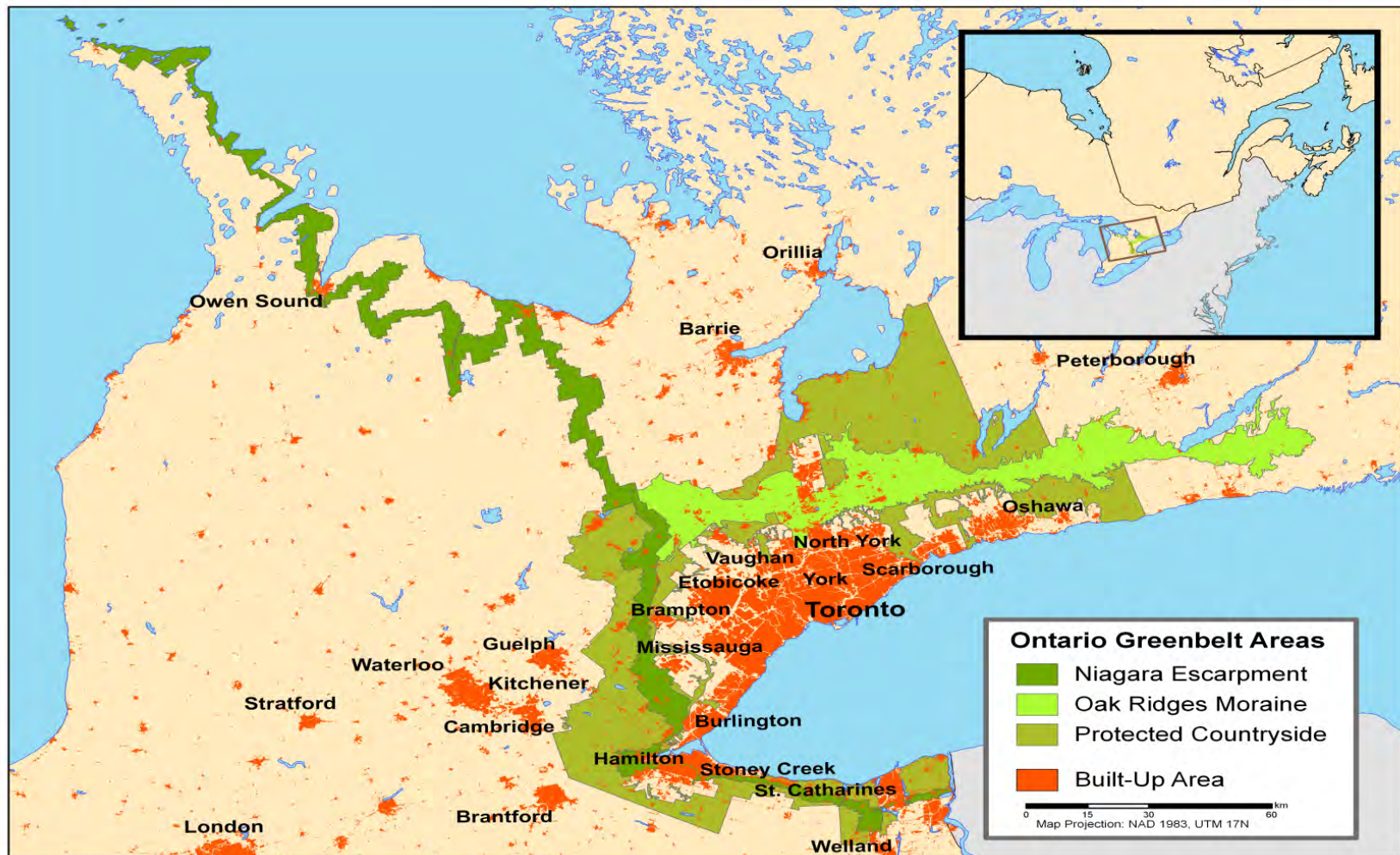
Nature: a new prescription for healthcare



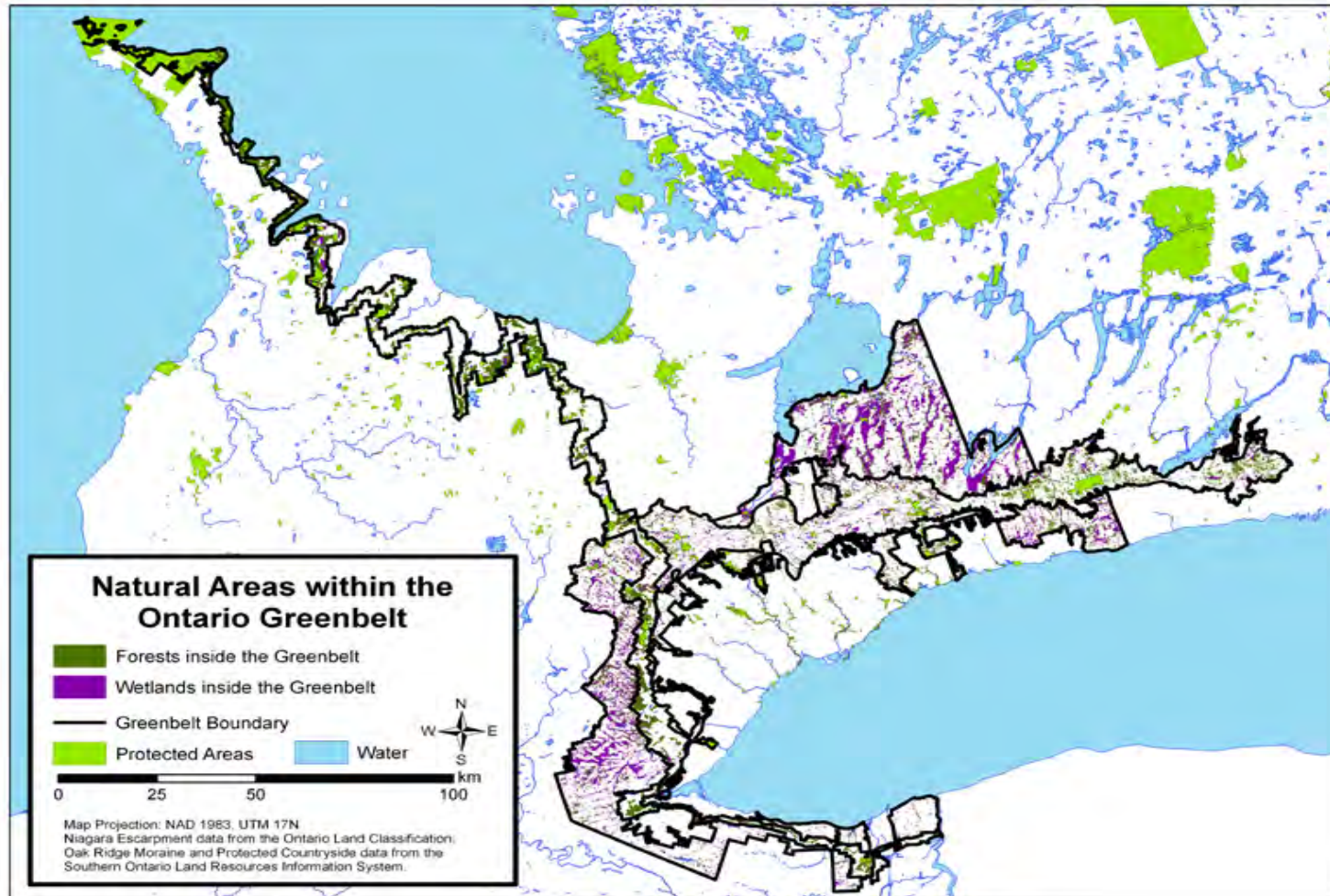


Our natural wealth
is taken for granted
because the benefits
are often invisible

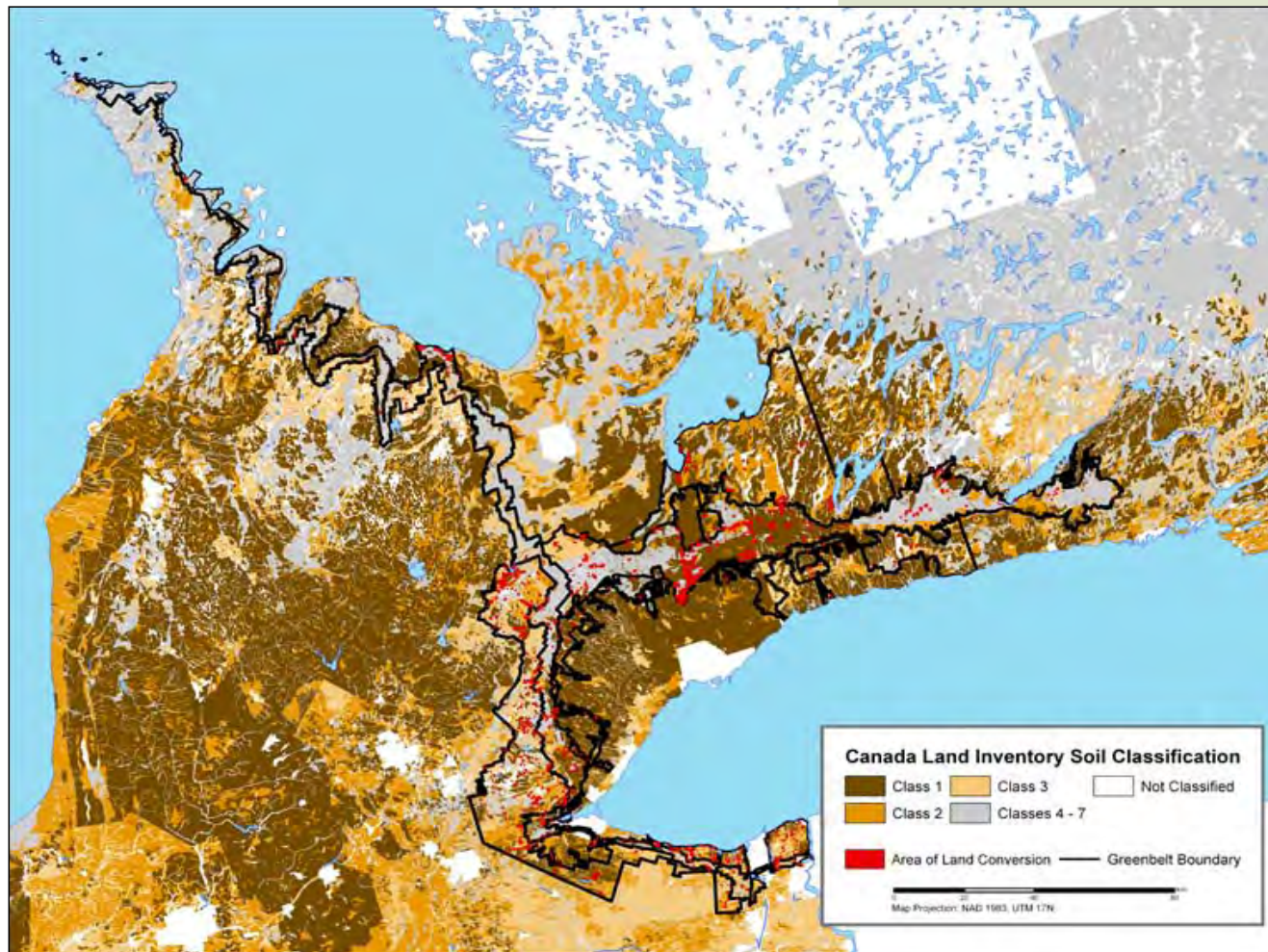
Ontario's Golden Horseshoe and Greenbelt



Natural Areas in the Greenbelt



Productive Agricultural Soil in the Greenbelt



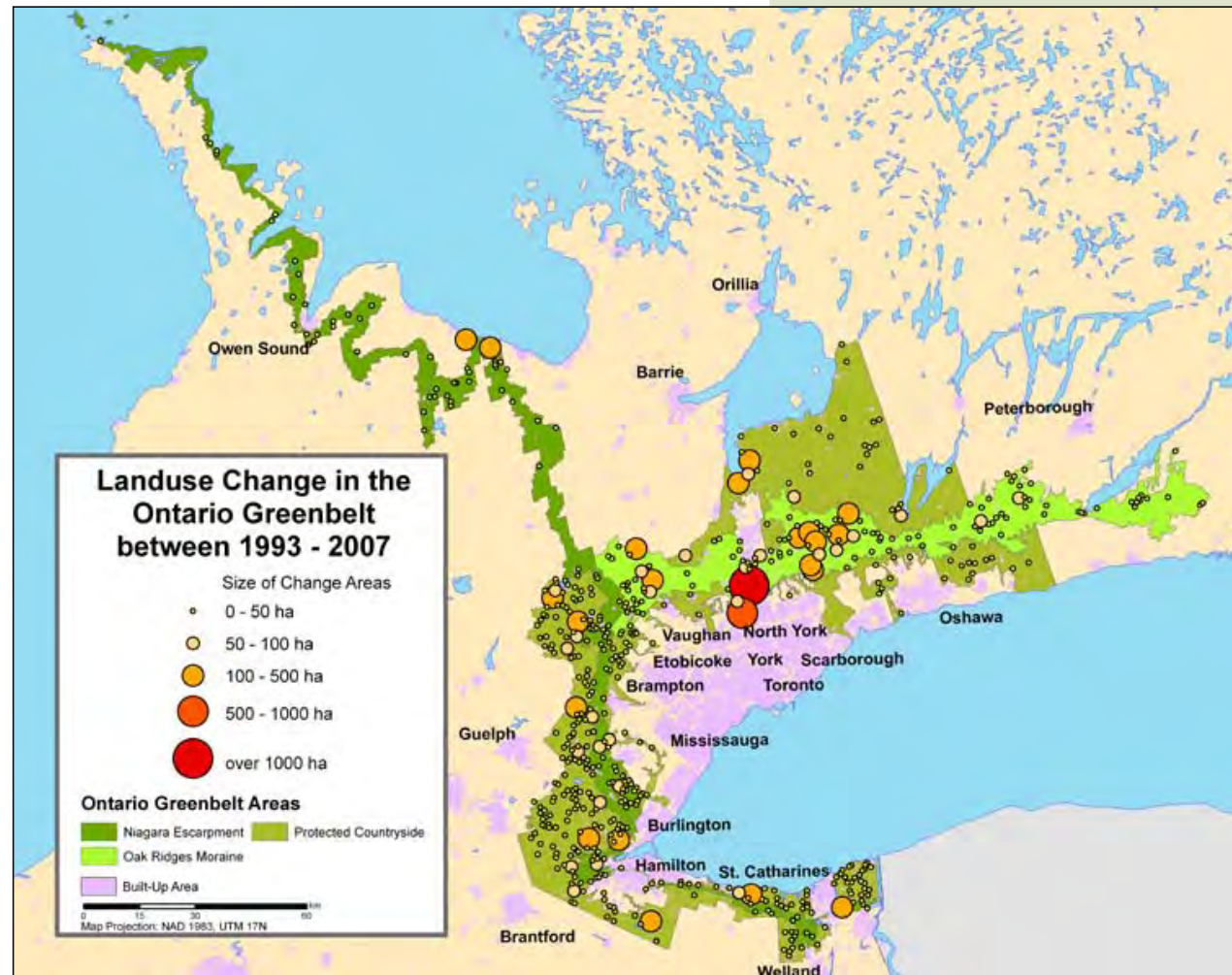


Examples of land uses in the Greenbelt. (A) Land uses in and around Milton, including urban development and quarry activity.



(B) Land uses near Aurora, including a race track and golf course.

Loss of Natural Capital in the Greenbelt



A young child with dark hair, wearing a white t-shirt and blue pants, stands in a forest. The ground is covered in fallen brown leaves. The child is looking up at the trees. The background shows several tree trunks and green foliage. A semi-transparent teal box is overlaid on the right side of the image, containing white text.

Does money
grow on trees?

Perhaps our
parents were
wrong.



\$2.6 Billion

Total value of benefits
from natural capital
in Ontario's Greenbelt

Pollinators



THANKS !

Twitter: @faisal_moola