



Striking a Balance Between Protection and Development: The Role of Protected Areas in Northern Québec

François Brassard


Direction du patrimoine écologique et des parcs

Ministère du Développement durable, de l'Environnement et des Parcs du Québec

December 8, 2011

Key Questions by Professor Scott

- 1) What is/has been your role in the establishment of protected areas in northern Québec? What factors have been key to success in establishing protected areas? What factors have impeded the establishment of protected areas?
- 2) As Québec works to build its protected area network in the north, how should protected areas be identified? For example: What should be protected? What activities and practices should be allowed and not allowed? How and by whom should the boundaries of the protected areas be defined?
- 3) What are the political and institutional issues to be addressed in order to achieve the goal of 50% of protected areas by 2035?



What is your role
in the establishment of
protected areas in northern Québec?

*Développement durable,
Environnement
et Parcs*

Québec 



Main Roles of MDDEP:

Coordinating the government strategy for establishing a network of protected areas throughout the region

- Analyzing the need for protected areas (gap analysis)
- Ensuring community involvement early in the process
 - Community proposals
 - Regional scenario studies
 - Opportunities and constraints analysis
- Soliciting constraints analyses from MRNF
- Identifying acceptable compromises
- Suggesting sites to be set aside for protected areas to the Government
- Providing legal and administrative oversight
- Stimulating development of scientific knowledge on the role of protected areas



What is a protected area?

“A geographically defined expanse of land or water established under a legal and administrative framework designed specifically to ensure the protection and maintenance of biological diversity and of related natural and cultural resources”

Natural Heritage Conservation Act, 2002, Government of Québec

What is a network of protected areas?

A series of protected areas constituting

• Representative samples of

- Biodiversity
- Natural and cultural resources


And contributing to effective conservation

- Locally
- Regionally
- Globally

While meeting the needs of local communities.

FOR A TERRITORY





What factors have been key to success in establishing protected areas?
What factors have impeded the establishment of protected areas?

*Développement durable,
Environnement
et Parcs*

Québec 

Striking a Balance

The network of protected areas also “represents” a social consensus achieved at a given time through negotiations on regional development decisions.

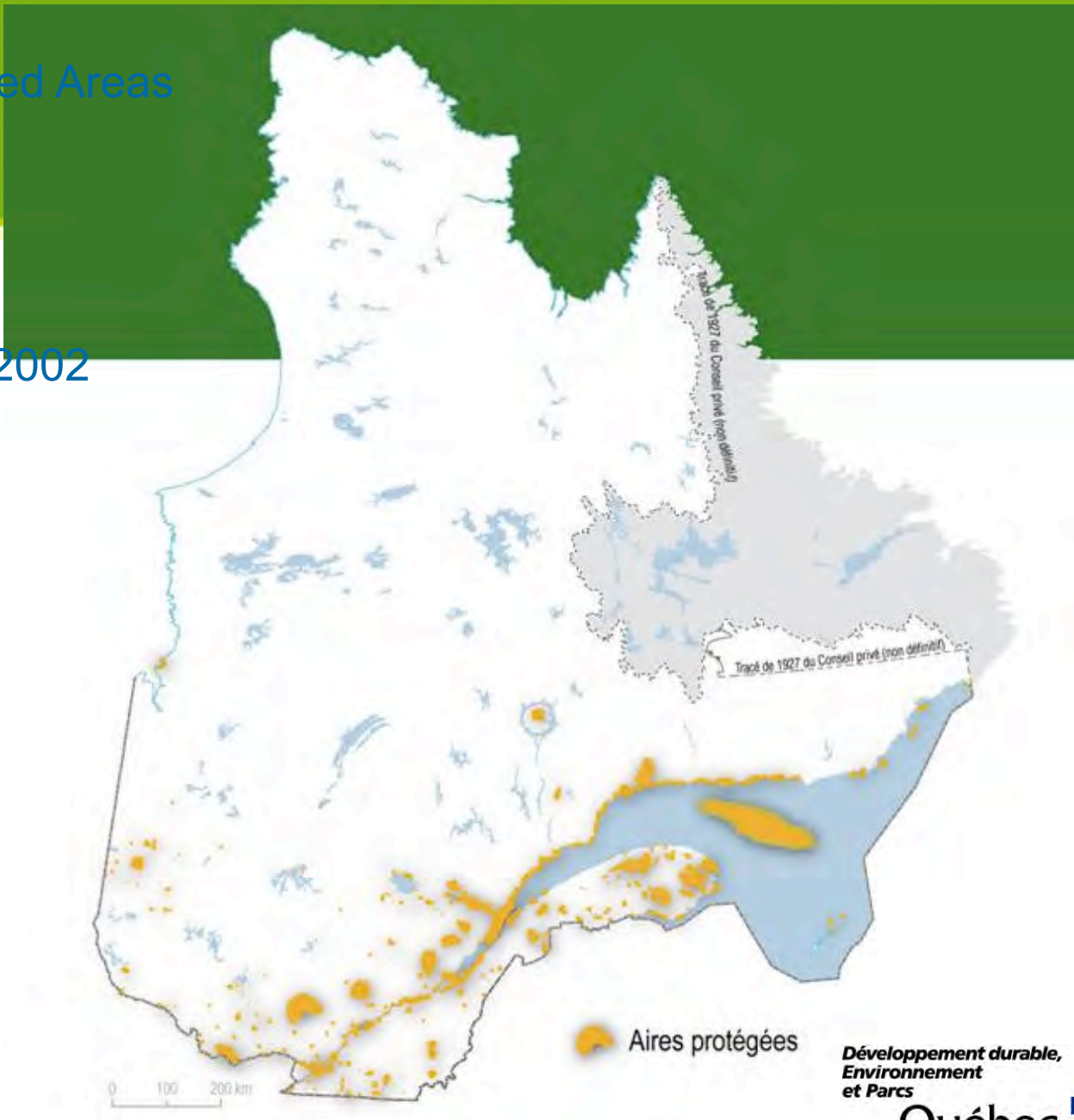
- Zones dedicated to conservation (in a broad sense)
- Zones dedicated to intensive development (mines, dams, etc.)

Choosing the zones dedicated to protection also implicitly means choosing those that will be dedicated to development.

Network of Protected Areas

Protected areas in 2002

1.29%



Développement durable,
Environnement
et Parcs

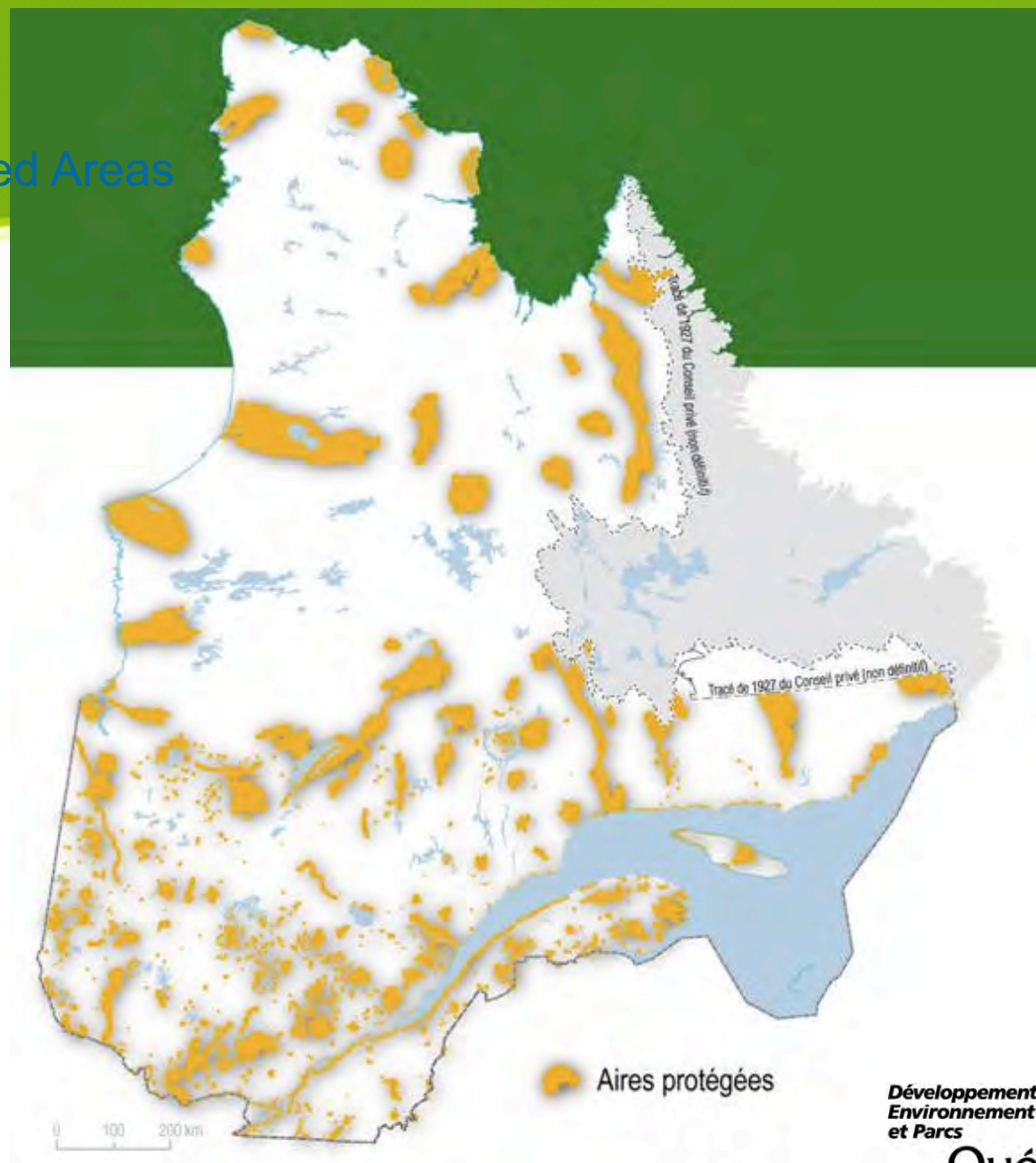
Québec 

Network of Protected Areas

Protected areas in
2011

8.35%

Next goal:
12% in 2015




*Développement durable,
Environnement
et Parcs*

Québec 

Factors of Success

- Government committed to nature conservation
- Communities rallying to protect the region
- An ability to establish a dialogue with the various stakeholders, particularly between
 - Government (MRNF, MDDEP, etc.)
 - Communities and their local governments
 - Industry
- An open participation and consultation mechanism spread over several years (areas provisionally placed under reserve)
- Environmental certification of industrial practices
- Involvement of academic stakeholders

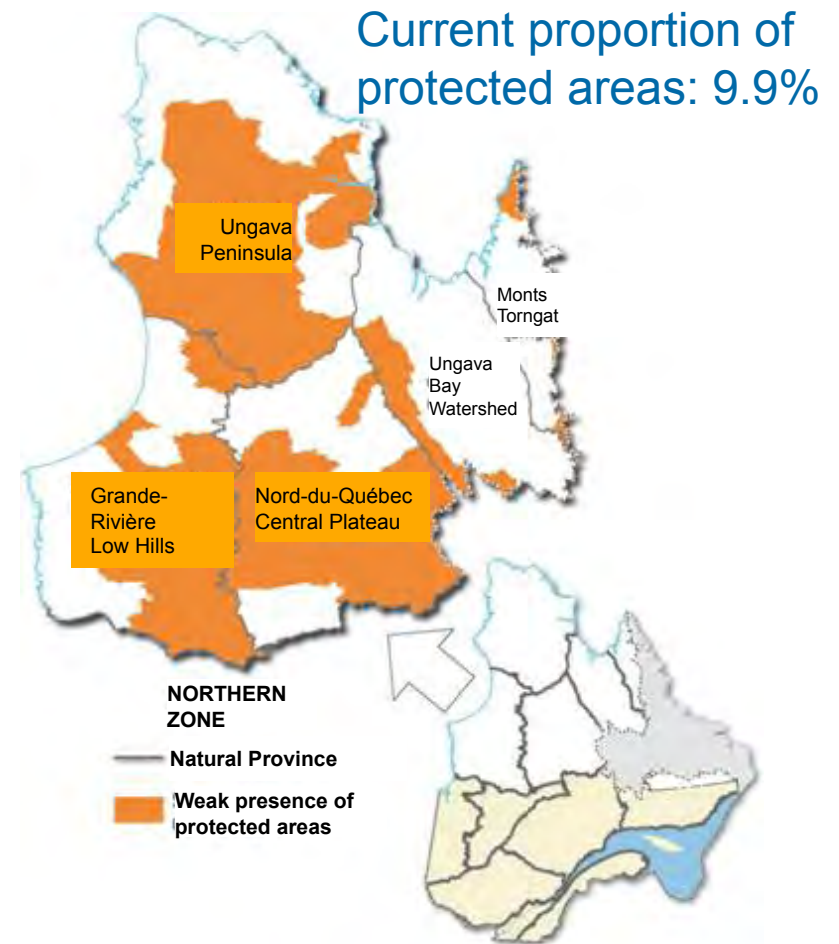


As Québec works to build its protected area network in the north,
how should protected areas be identified?
What activities and practices should be allowed and not allowed?
How and by whom should the boundaries of the protected areas be defined?

Theme 1. Representativeness of the Network of Protected Areas

Northern Zone

Create protected areas covering at least 12% of the territory, in particular by protecting environmentally significant aquatic ecosystems and large ecosystems that are sparsely represented or unrepresented, through the use of IUCN categories




The Participatory Process

	Stage	Stakeholder				
		MDDEP	MRNF	First nations	CRÉ	
Reserve Process	1	Presentation of the regional profile of protected areas				
	2	Analysis of regional protected area ecological deficiencies				
	3	Stakeholder and citizen-proposed protected areas ¹				
	4	Boundaries of zones under study				
	5	Examination of scenarios				
	6	Boundaries of territories of interest (TI)				
	7	Overall analysis of land constraints				
	8	Definition of TI acceptable limits				
	9	Official TI stakeholder consultations				
	10	Preparation of the memorandum for Cabinet				
	11	Protected areas placed under reserve (provisional status)				

1. The MDDEP welcomes proposals at all times.

- Working Document -



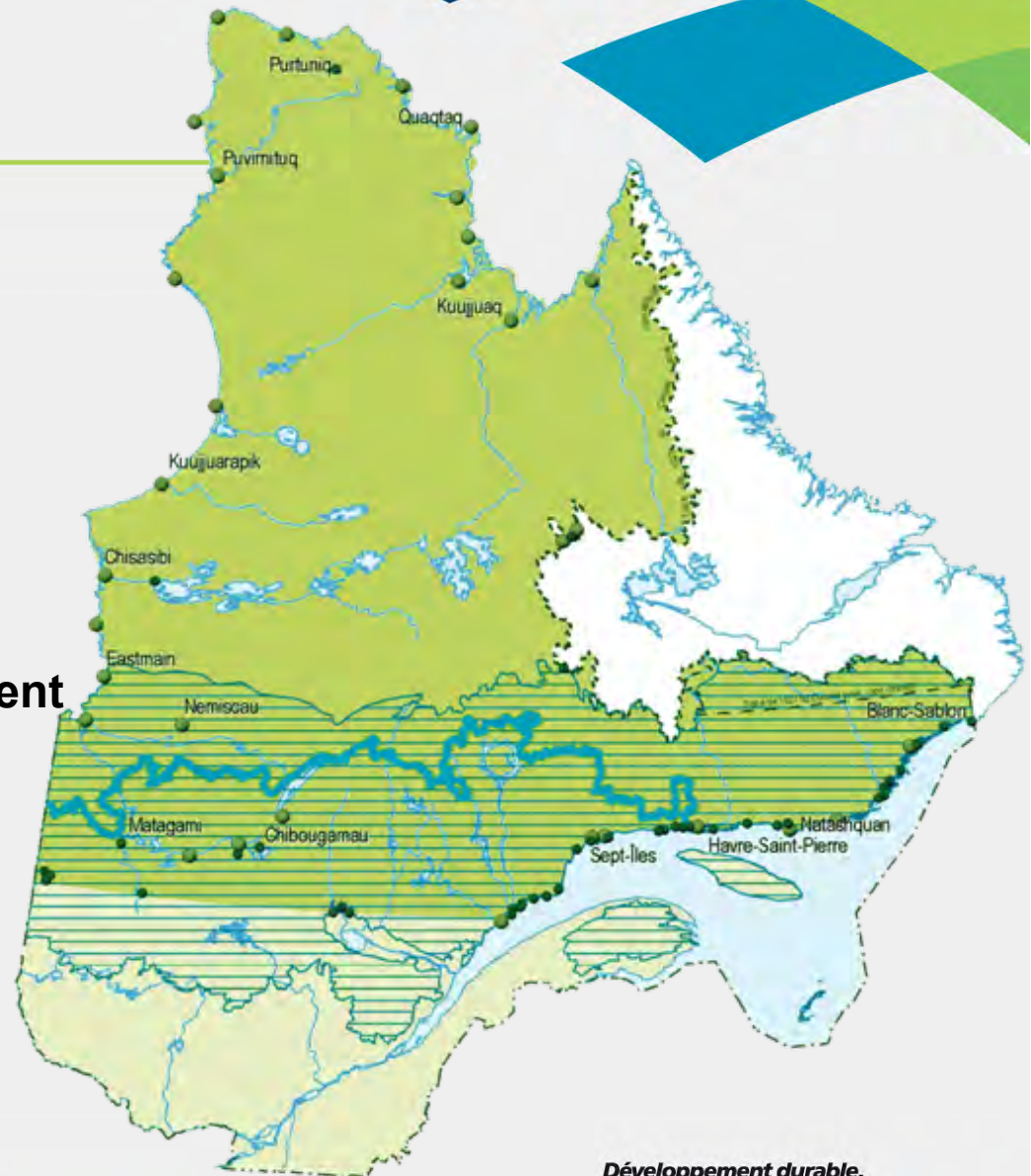
What are the political and institutional issues to be addressed in order to achieve the goal of 50% of protected areas by 2035?

*Développement durable,
Environnement
et Parcs*

Québec 

FORESTRY RESOURCES

- Territoire d'application du Plan Nord
- Forêt boréale continue
- Limite nord de la forêt aménagable
- Communauté autochtone
- Communauté locale



Challenge of ecosystem management

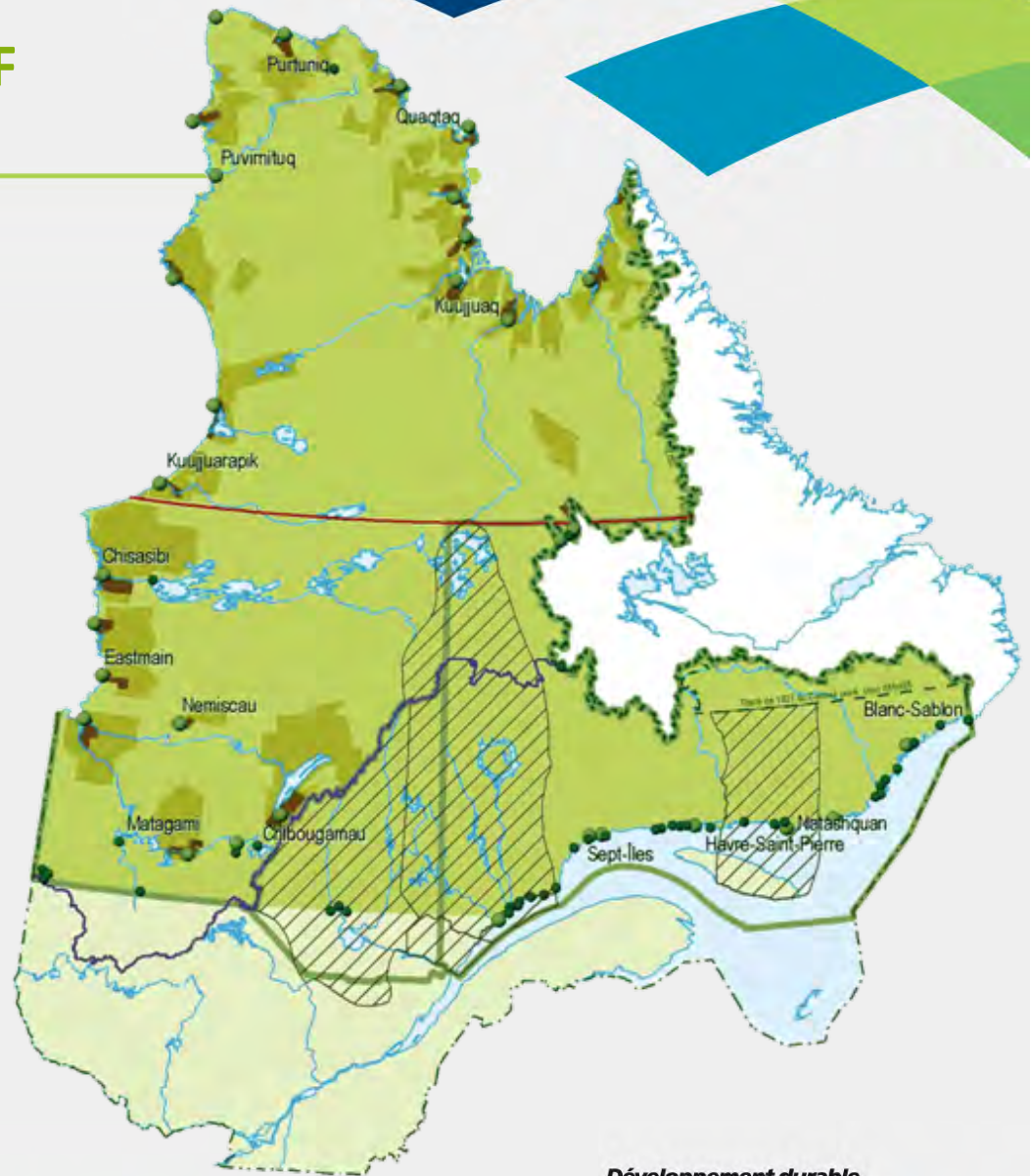
- Decrease in allowable cut
- Environmental certification
- Economic crisis
- Innovative capacity
- Consideration of agreements



VARIOUS SUBDIVISIONS OF QUÉBEC

- Territoire d'application du Plan Nord
- Terre de catégorie II
- Terre de catégorie I
- Nitassinan (en négociation)*
- Limite de région administrative
- Limite sud du territoire de la CBJNQ
- Limite sud du Nunavik
- Communauté autochtone
- Communauté locale

Land claims negotiations
Community development and quality of life
Peace of the Brave
Framework agreement on the governance of the Eeyou Istchee–Baie-James territory



CREE TRAPPING TERRITORIES



PLAN
NORD



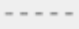



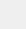
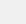
Pour un équilibre entre les types de développement et les formes de conservation
dans une perspective de développement durable

Développement durable,
Environnement
et Parcs

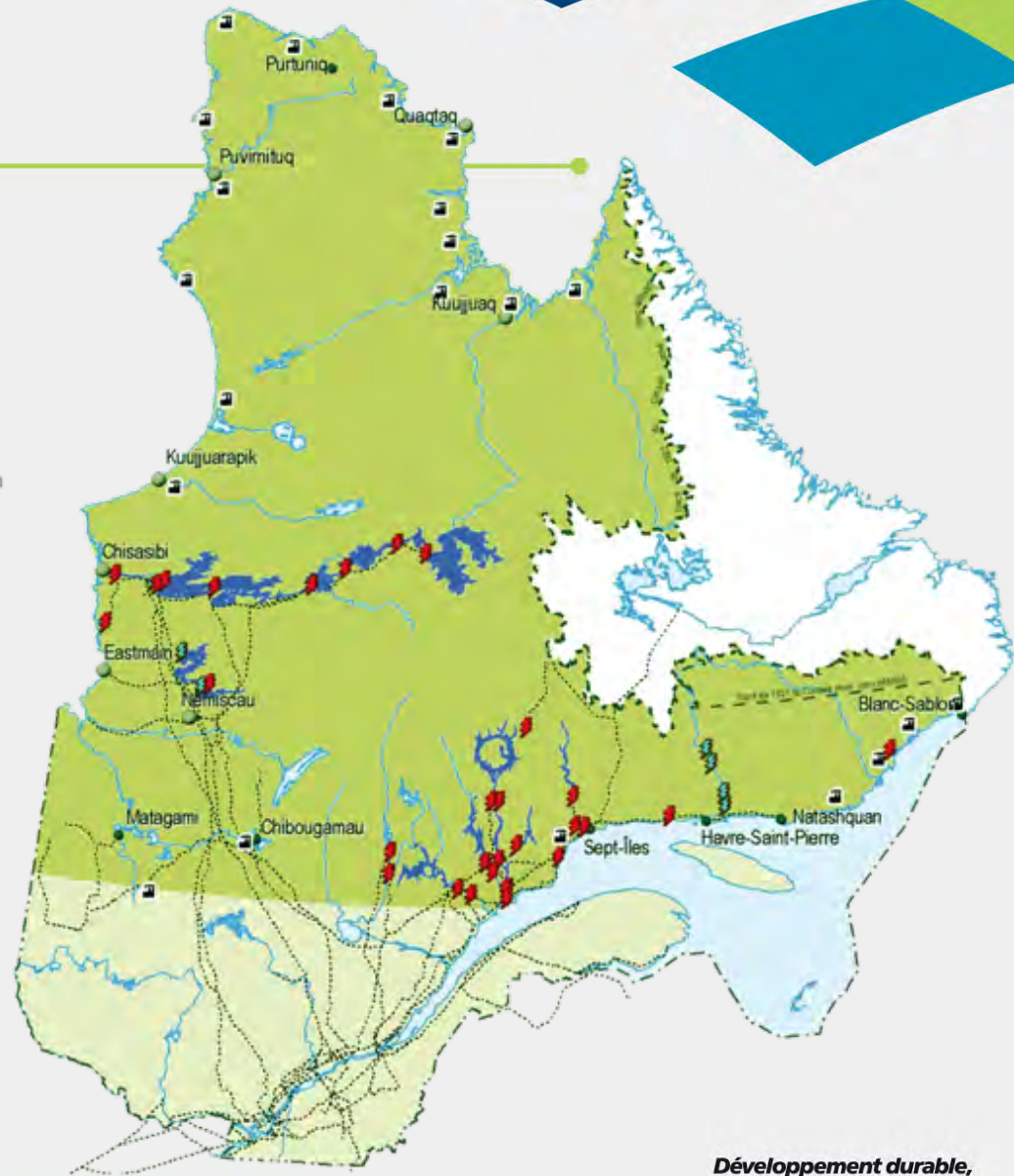
Québec




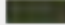



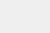
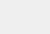
ENERGY PRODUCTION AND TRANSMISSION FACILITIES

-  Territoire d'application du Plan Nord
-  Réservoir hydroélectrique
-  Ligne de transport d'énergie
-  Centrale hydroélectrique en construction
-  Centrale hydroélectrique en fonction
-  Centrale thermique
-  Communauté autochtone
-  Communauté locale

Future projects
Links between mining
projects/energy needs

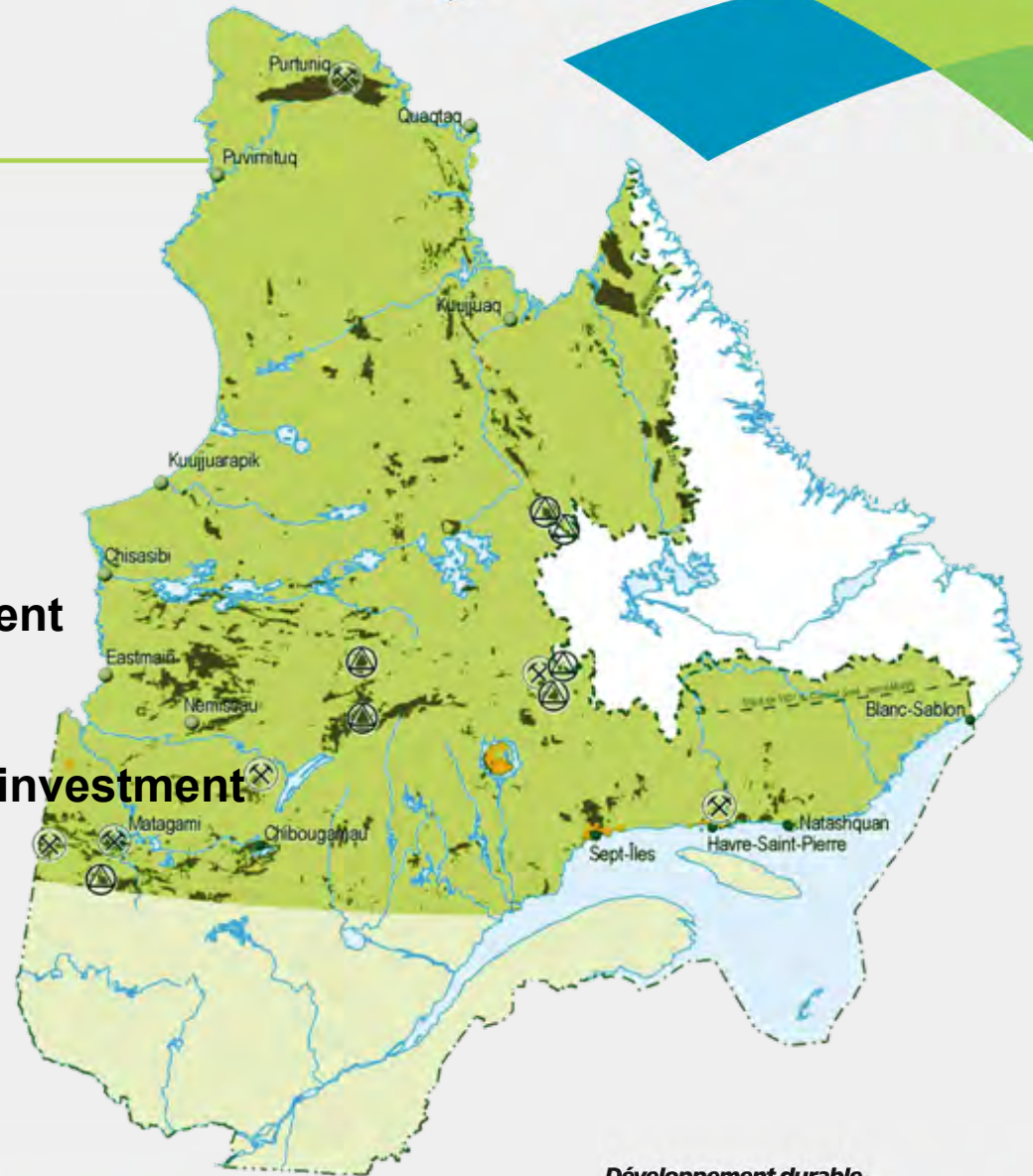


MINING, OIL, AND GAS RESOURCES

-  Territoire d'application du Plan Nord
-  Titre actif d'exploitation minière*
-  Permis d'exploitation de pétrole et de gaz**
-  Mine en développement ou en mise en valeur
-  Mine en production
-  Communauté autochtone
-  Communauté locale

Challenge of sustainable management

- mineral potential
- **Creating conditions favorable to investment**
- **Exploration vs. development**



STRUCTURED WILDLIFE AREAS

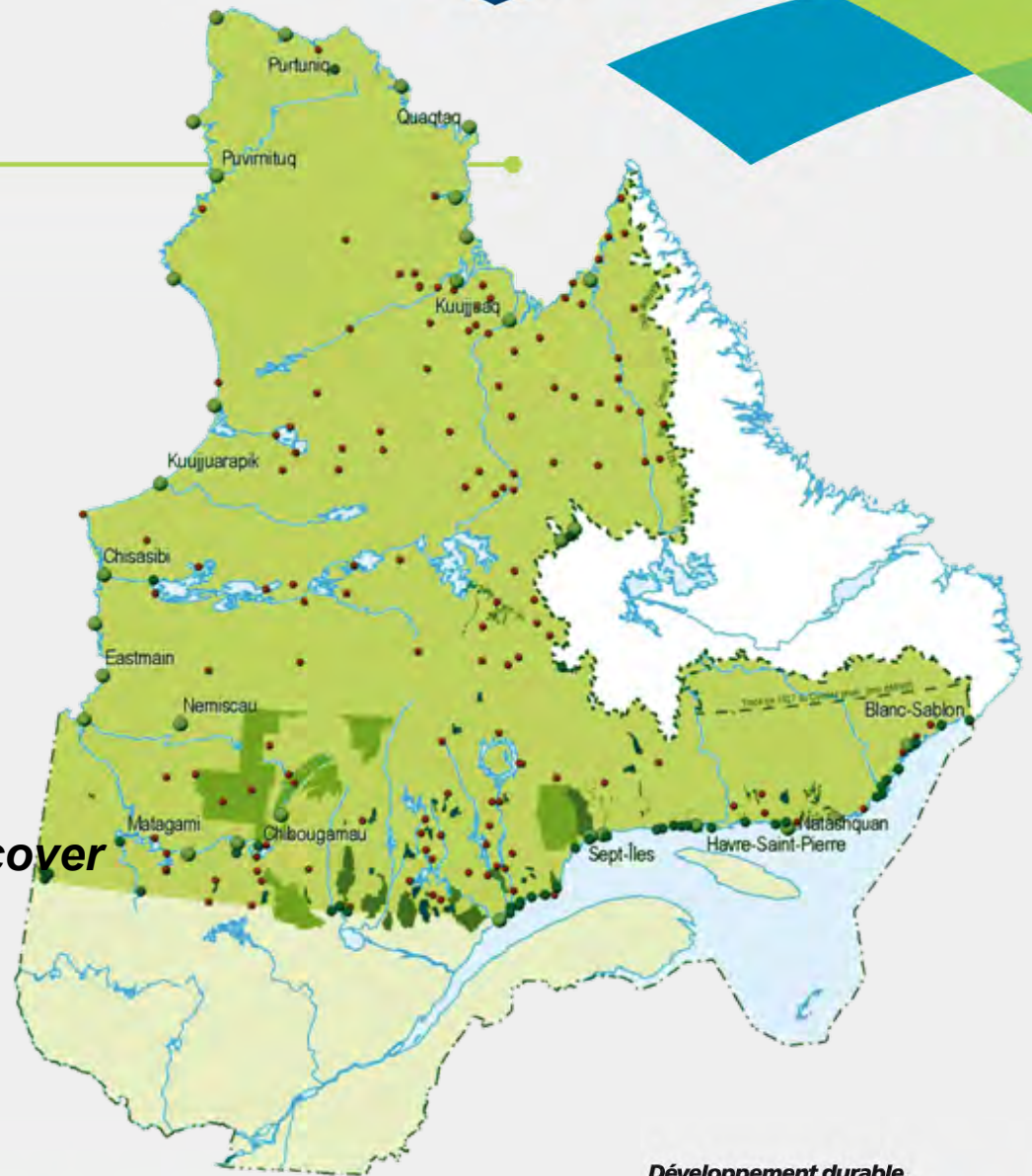
- Territoire d'application du Plan Nord
- Réserve faunique
- Zone d'exploitation contrôlée (ZEC)
- Pourvoirie avec droits exclusifs
- Pourvoirie sans droits exclusifs
Communauté autochtone
Communauté locale

Tourism Development

November 23, 2011

Plan Nord tourism strategy

Cultures and Wilderness to Discover



PLAN
NORD

Pour un équilibre entre les types de développement et les formes de conservation
dans une perspective de développement durable

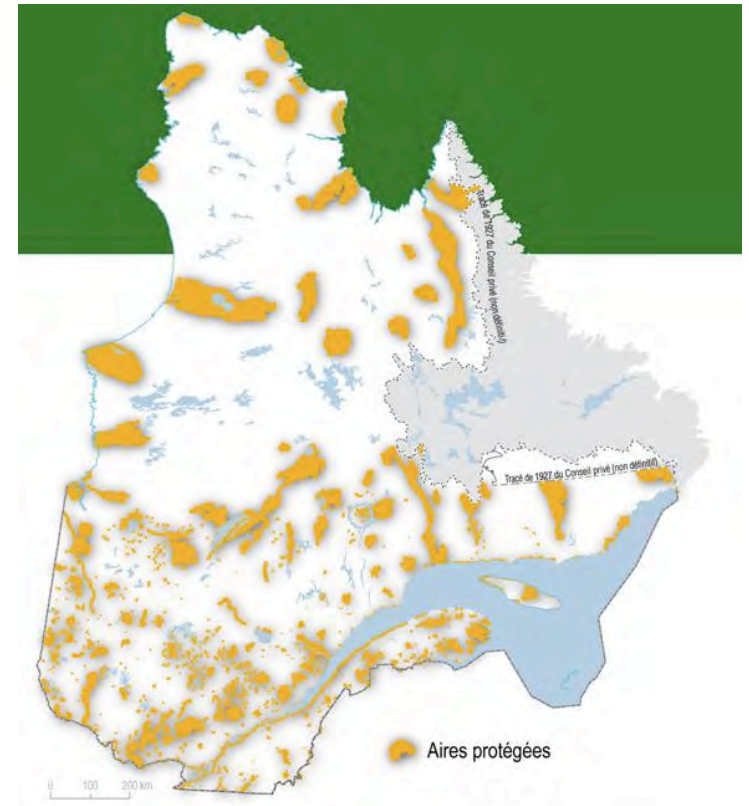
Développement durable,
Environnement
et Parcs

Québec



Conclusion

- A large percentage of protected areas does not necessarily guarantee the efficiency of these areas.
- The location of new protected areas should be based on an integrated approach to northern development.
 - Protected areas should be able to temper development through the conservation of regional values.
- We need to take the time to do things right with the support of local communities.





The discussion is
open!

*Développement durable,
Environnement
et Parcs*

Québec 